



Primary Pro

**Total solution for Air Source Heat
Pumps & External Oil boilers**

**External heating & waste
water protection**

info@primarypro.co.uk

YouTube

Click here



Website

Click here



TOTAL SOLUTIONS

ASHP are part of the Government's plan to reduce carbon emissions and tackle climate change, meaning it will be a big part of the heating industry, now and in the future.

It is so important that they are fitted to make sure every bit of energy is used efficiently. Until now, the products available have been very hard to install to a standard that not only retains the heat/efficiency, but also looks aesthetically pleasing to the customer / homeowner

Speaking to installers, they asked for products that could be ...

- | | |
|---|--|
| 1 Already weather/UV proof
Not have to be painted on-site, to save on labour costs or when time and weather may not be on their side | 2 100% water proof
Making sure no moisture can get through the insulation is so important for the Efficiency of the heat pump and system
All our products are 100% water proof |
| 3 Easy to install
Simple to cut and seal angles / joints and all fittings like Antifreeze valves | 4 Able to install through walls
Easy to insulate through the fabric of the building and seal with our Insulation and Bond & Seal, so complying with new Part L Reg's |
| 5 Maintainable
Easy to inspect and maintain on annual services | 6 Quality looks
Looks quality once installed and simple to maintain with our Maintenance coat |

Taking all the above into account, along with energy efficiency, we have made the very best products to help all at every stage of an ASHP installation

EXTERNAL HEATING INSULATION

22MM X 25MM

28MM X 19MM

35MM X 19MM

42MM X 19MM



Our insulation is for 22mm, 28mm & 35mm pipes. The wall thickness is 19mm for 28mm, 35mm and 42mm.

The 22mm is 25mm thick, so the same clips and core-bit can be used as the 28mm x 19mm.

The 40mm was produced to help insulate any 1 1/4" connections on the heat pump, available in 1M or 500mm lengths.

All are protected with our unique weather & UV protective coating allowing you to cut/mitre to the required size. It's also simple to cut and insulate all isolation valves or other external fittings.

To ensure the heating pipework is fully insulated, the insulation should go through the fabric of wall, then sealed with our Bond & Seal.

See our videos on our website or YouTube channel for more information.

INSULATION JACKETS

Insulating and sealing not only the external pipework but also any external fittings is of paramount importance, not only for the efficiency of the heat pump and system but also to protect the external fitting from the elements.

The first fitting manufacturer to approach us was Intatec, we worked with them to provide an insulation solution for their Intaflex range of flexible hoses for heat pumps.

Installers fitting Intaflex hoses asked us to make insulation jackets for other Intatec external fittings like antifreeze and lever valves, as they wanted to ensure the external pipe and fittings were properly insulated and sealed

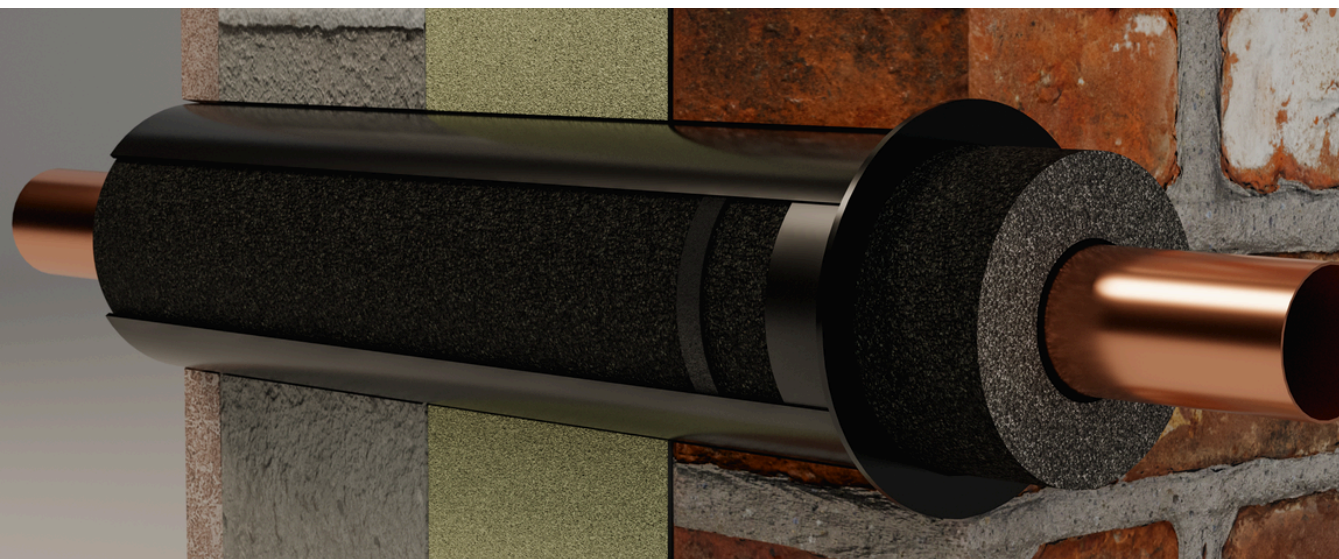


Insulation jackets for Intatec lever and antifreeze valves

WALL SLEEVING

Sleeving insulated pipework through the wall to protect from debris/acids in the cement and moisture has been a real issue. The problem is currently available plastic pipework is either too small or too large. Our solution is to make Pro Sleeves for 22mm, 28mm and 35mm insulated pipework.

Our **Pro Sleeve** can be fitted and sealed using our patented **Bond & Seal** to prevent heat loss and moisture ingress.



CONDENSATE PRO INSULATION 35MM X 13MM



Our Condensate Pro for 35mm solvent waste pipe is perfect for waste water to be taken from the heat pump to a drain or soakaway.

Cut to the required length/angle and seal with our Bond & Seal ensure no moisture can penetrate the insulation.

The success of Condensate Pro insulation was the reason many ASHP installers requested we make external heating pipework insulation, as they had been using this to protect the condensate pipe on heat pumps.

You can purchase Condensate Pro as a single 1m length or in a pack of 3 x 1 m lengths.

BOND & SEAL 290ML



Our Bond & Seal 290ml aids installers to seal joints, it provides the perfect seal for the insulation through the wall to prevent energy loss, or weather (rain/snow) entering the inner fabric of the wall.

You can also use our Bond & Seal to seal our insulation or pre-insulated flexible pipes to the heat pump; with it being flexible when cured, it takes the impact of any vibration from the heat pump.

As the Bond & Seal is subjected to all weather conditions, even when cured it will expand and contract with varying temperatures.

SEALING RING AND GRINDER HEAD

Like all other areas of insulating external pipework, sealing around the insulated pipe as it passes through the wall is just as important.

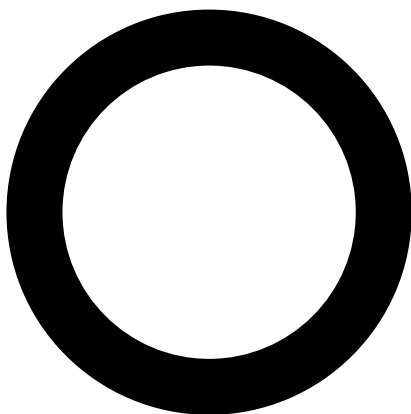
It's important for three reasons:

- Provides an airtight seal for energy efficiency, stopping cold drafts from getting in and heat from getting out
- Prevents insects from getting into the cavity wall/property
- Stops moisture/damp penetration reaching the internal of the property This seal has to be made correctly, it can be fiddly and time-consuming making a quality looking seal to the customers home.

WE HAVE A SOLUTION

We have made a **sealing ring** that makes sealing external walls simple, coupled with our Primary pro **grinder head** to flatten any uneven surfaces. It makes a 4mm indentation to the flat wall (brick wall) to make the wall sealing surface flush.

This not only saves time and makes an energy-efficient seal, it looks fantastic on a customers property.



**22/28/35MM
SEALING RINGS**



**PRIMARY PRO 100MM
GRINDER HEAD**



RUBBER LINED CLIPS

To clip the pipework and insulation to the wall, our rubber-lined clips have been made for our 22mm, 28mm and 35 primary pro insulation.

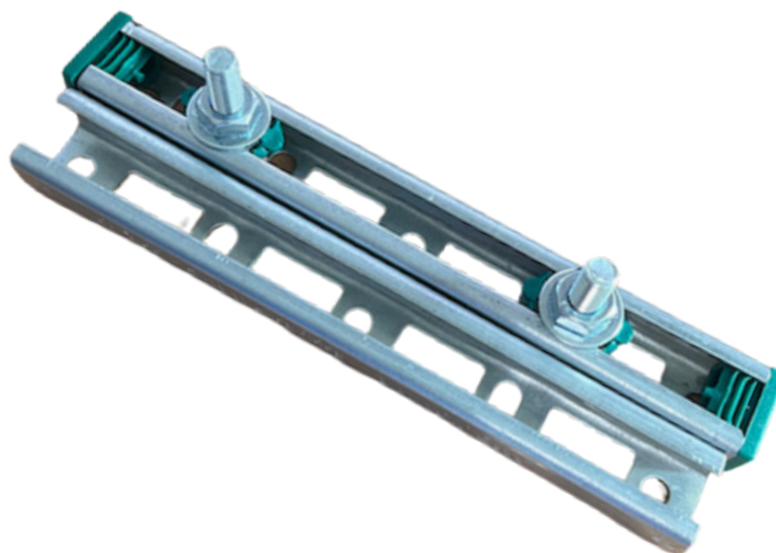
The rubber on the clips prevents damage to the insulation in the summertime when the clips get hot.



We have the standard pack plates, or we have made our Primary Pro easy-fix backplate. The easy-fix is at least five times as fast to fit the clips to the wall and has multiple fixing points, which help fit all your clips when time and the weather are not on your side. It's essential to have the clips spaced off the wall to allow air movement around the insulation in all seasons and temperatures. It also aids maintenance and recoating when required.



**STANDARD
BACK PLATE**



**PRIMARY
PRO EASY FIX**

MAINTENANCE COAT 250ML

Depending on where the insulation is fitted, surrounding air quality and UV, this insulation may need re-coating.

It is simple to maintain by re-coating with our Maintenance Coat. Our Maintenance Coat makes re-coating the insulation simple, you can also coat the Bond & Seal.

On annual services, visually inspect the insulation and simply re-coat as and when required, we suggest a minimum of every 4 years.

The Maintenance Coat can be used as a finishing coat before handover, to remove brick dust and give that WOW factor.

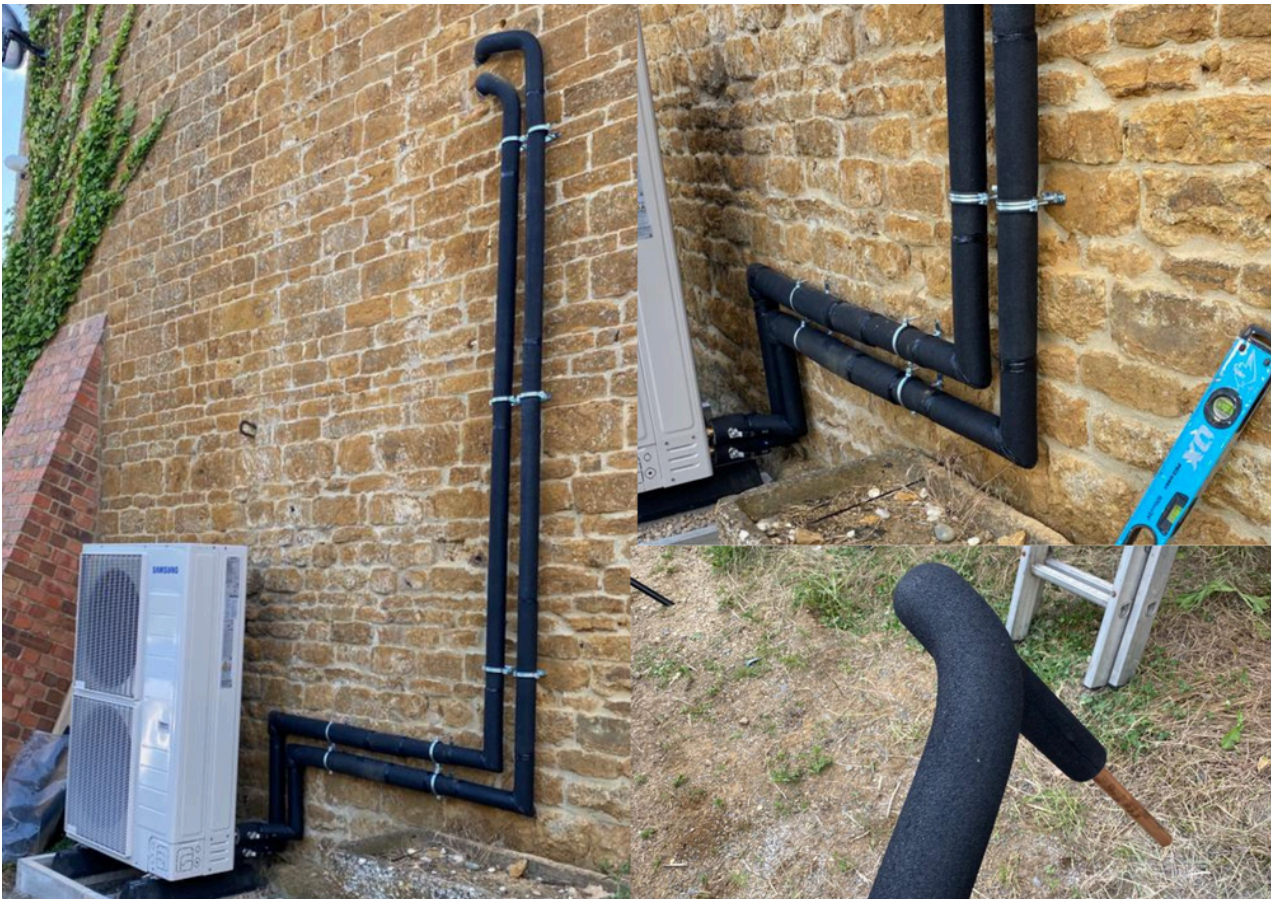
Being water based makes it easy to clean brushes when carrying out a heat pump service.



PRODUCTS & CODES

PRIMARY PRO 22mm x 25mm x 1M	AS045
PRIMARY PRO 28mm x 19mm x 1M	AS022
PRIMARY PRO 35mm x 19mm x 1M	AS033
PRIMARY PRO 42mm x 19mm x 1M	AS042
PRIMARY PRO 42mm x 19mm x 500mm	AS043
RUBBERLINED CLIP FOR 22mm & 28mm	AS008
RUBBER LINED CLIP FOR 35mm & 42mm	AS018
MALE M10 BZP BACK PLATE	AS009
PRIMARY PRO EASY FIX	AS050
CONDENSATE PRO 35mm x 13mm PACK OF 3 x 1M	IG001
CONDENSATE PRO 35mm x 13mm x 1M	AS111
BOND & SEAL 290ML CARTRIDGE	AS001
MAINTENANCE COAT 250ml TIN	IG005
SEALING RING FOR OUR 22mm & 28mm (PACK OF 10)	AS35
SEALING RING FOR OUR 22mm & 28mm (PACK OF 100)	AS35B
SEALING RING FOR OUR 35mm (PACK OF 10)	AS36
SEALING RING FOR OUR 35mm (PACK OF 100)	AS36B
PRIMARY PRO GRINDER HEAD	AS34
INTATEC 1" & 28mm ANTIFREEZE VALVE JACKET	AS32
INTATEC 1 1/4" & 35mm ANTIFREEZE VALVE JACKET	AS52
INTATEC 1" FLAT FACE LEVER VALVE JACKET	AS33
INTATEC 1 1/4" FLAT FACE LEVER VALVE JACKET	AS53
PRIMARY PRO SLEEVE 22/28mm	PS028
PRIMARY PRO SLEEVE 35mm	PS035
DIAMOND CORE BIT FOR 22/28mm SLEEVE	DC78
DIAMOND CORE BIT FOR 35mm SLEEVE	DC91

BELOW ARE A FEW INSTALLATION PHOTOS:







www.primarypro.co.uk

If you have any questions or need any help, please don't hesitate to contact us on

info@primarypro.co.uk